

Supplementary Data

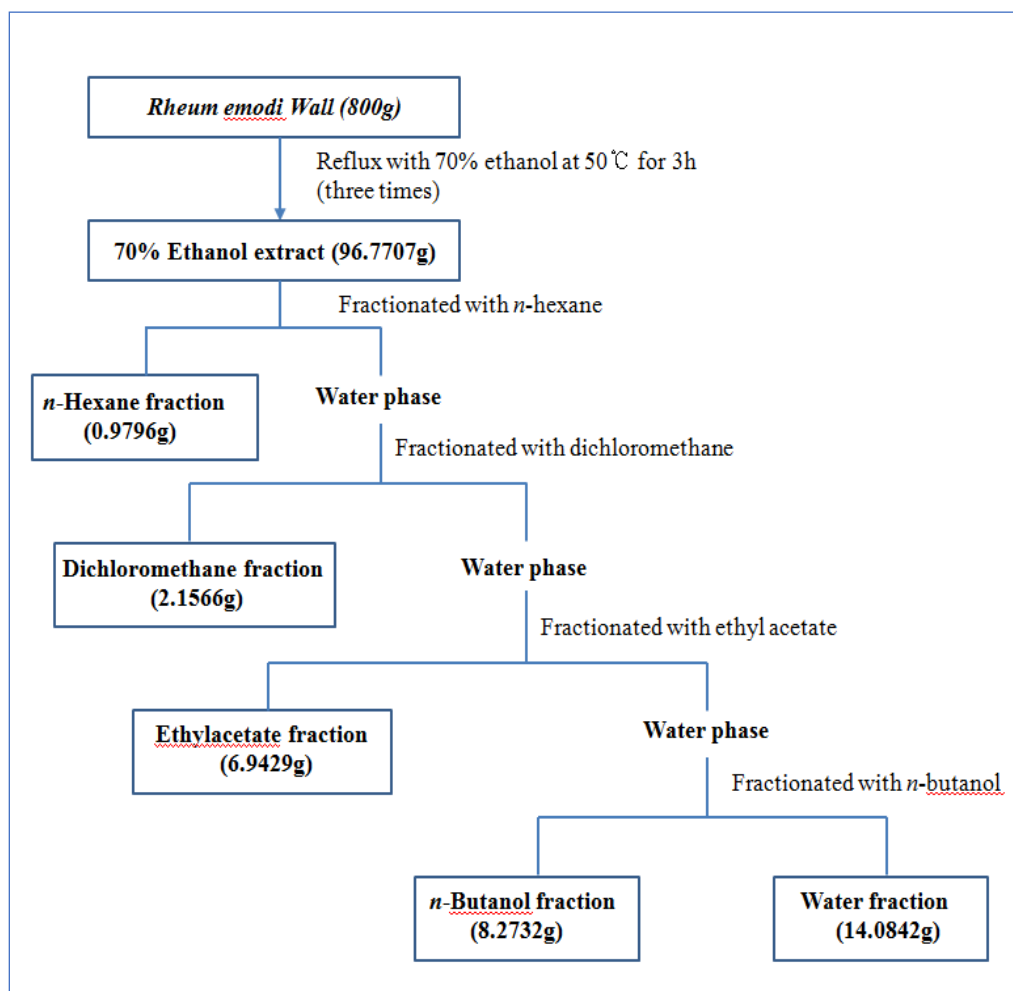


Fig. S1: Extraction and fractionation of *R. emodi*

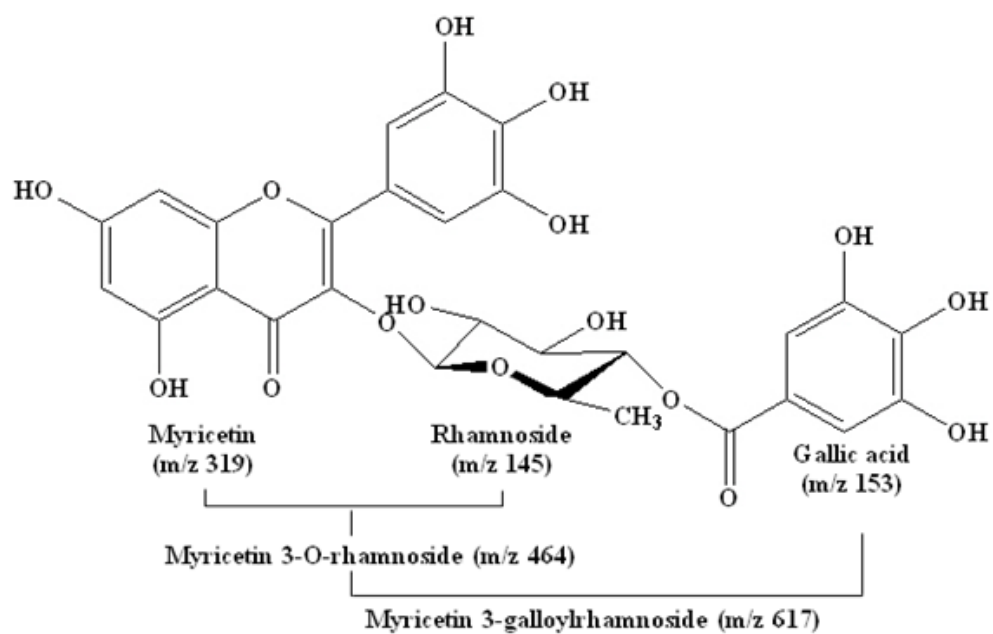


Fig. S2: Chemical structure of myricetins isolated from ethyl acetate fraction of *R. emodi*

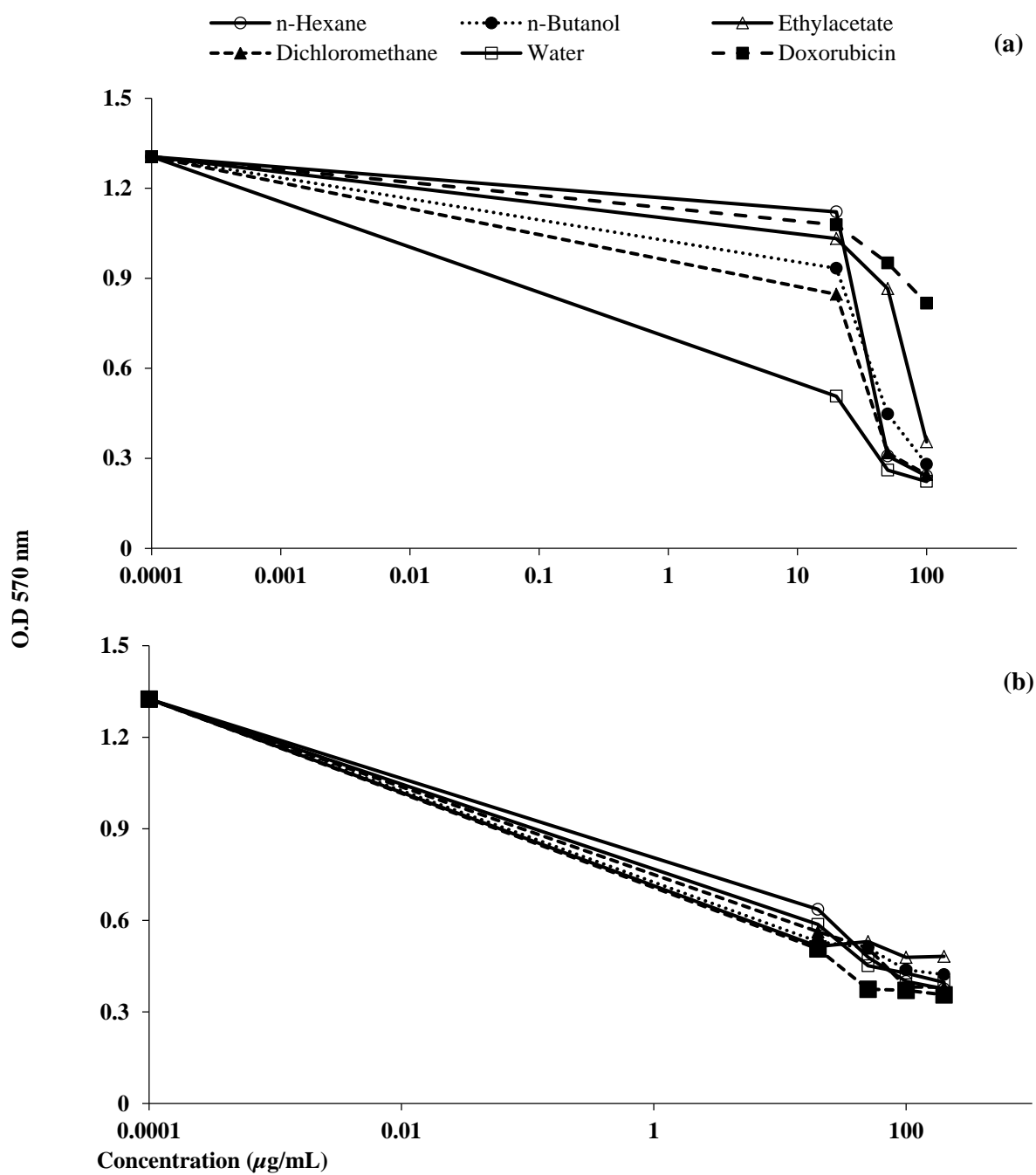


Fig. S3: Cytotoxic activity of *R. emodi* on (a) A549 and (b) MCF-7 cell lines by the concentration of fractions

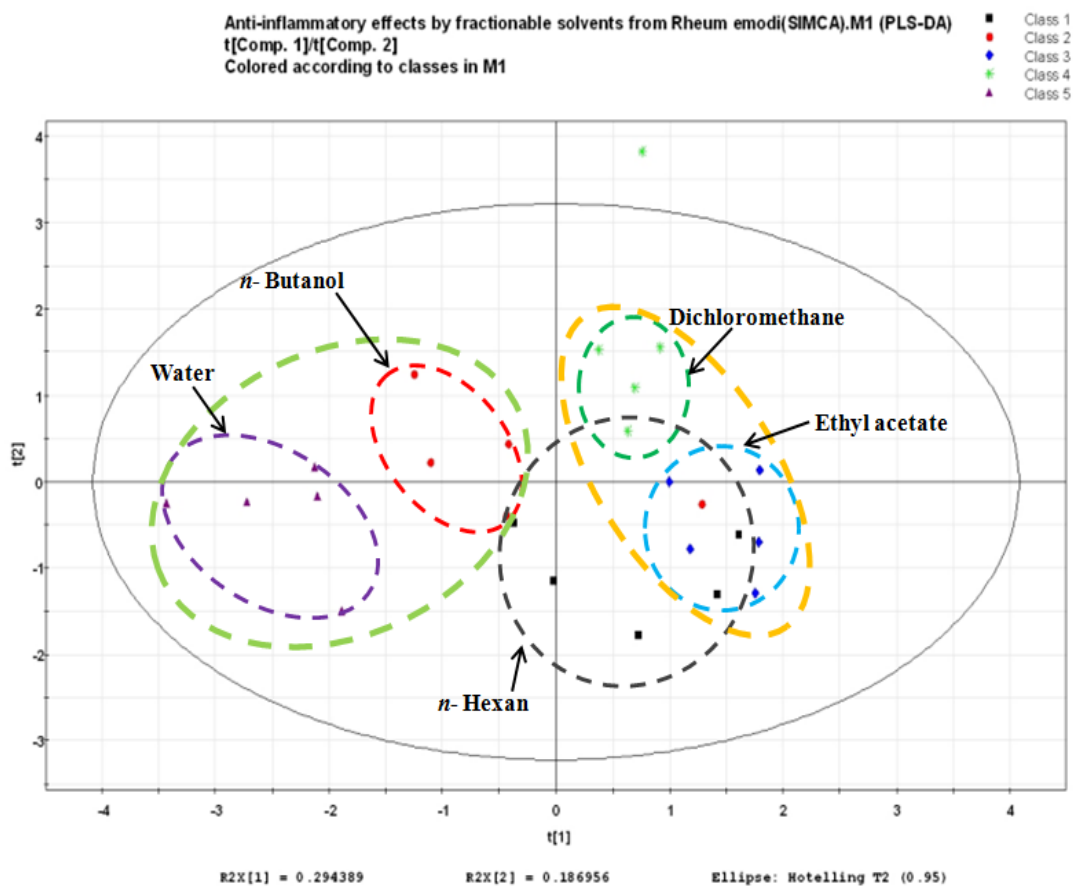


Fig. S4: Score plotting chart of principal components 1 and 2 of the PLS-DA results obtained from the data set by compounds profiling on the anti-inflammatory from *R. emodi* fractions. This chart showed classification by origin on the all samples

(**Black circle:** *n*-Hexan, **Red circle:** *n*-Butanol, **Blue circle:** Ethyl acetate, **Green circle:** Dichloromethane, **Purple circle:** Water)